

The Diplomas

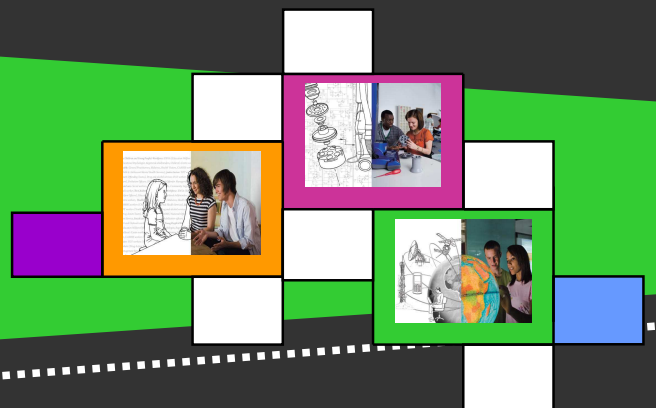
in St Albans and Harpenden September 2009



Creative & Media - Engineering - Hospitality - IT - Society, Health and Development

Information Technology

STUDENT INFORMATION LEAFLET



At Foundation, Higher and Advanced levels across St Albans and Harpenden

PRINCIPAL LEARNING (PL)

Depending on your options, and which school you are attending, this strand of the Diploma will be taught by at least two from the following providers:

Beaumont School (Language, Maths and Computing College)

Francis Bacon Maths and Computing College

Nicholas Breakspear School (Sports College)

Oaklands College

Roundwood Park School (Language, Maths and Computing College)

This element is the biggest, and accounts for over half of the learning time:

- at Foundation level PL will be about 3.5 hours per week on your timetable
- at Higher level about 6 hours per week
- at Advanced level about 7.5 hours per week

At least 50% of this element will be practical or applied learning.

Content includes: IT and communications within organisations, investigating real organisations and running a mini enterprise, designing and building real multimedia products, designing, building and testing networked PCs, office applications, web, sound and video editing, animation, web and project management software.

GENERIC LEARNING (GL)

Generic Learning includes:

- an independent project of your choosing (related to the Diploma line and with guidance from your tutors)
- development of Personal Learning and Thinking Skills (PLTS)
- preparation for Functional Skills modules

These are all mandatory parts of the Diploma.

Functional Skills in English, Maths and IT will normally be taught by your home school or college.

You will also have regular tutorials, through which you will be given high quality advice and guidance.

This element accounts for about 3 - 4 hours per week on your timetable. However bear in mind that:

- some of the PLTS and the Functional Skills may be taught as part of the Principal Learning
- the project will be an independent piece of work completed in your own time

ADDITIONAL SPECIALIST LEARNING (ASL)

You can select from a wide range of options here, which depend to a certain extent on your providers, but may include:

- DIDA Units
- OCR Nationals
- BTEC First Award
- BTEC National Award
- a range of Vocational qualifications
- modern foreign languages
- a range of GCSEs or A levels

The Additional Specialist Learning is designed to give you the opportunity to either study an aspect of the Diploma in more depth, perhaps leading to a related vocational or academic qualification, or to broaden your learning into a complementary course, for example a modern foreign language or art history.

- at Foundation level ASL will be about 2 hours per week on your timetable
- at Higher level about 2.5 hours per week
- at Advanced level about 5 hours per week

EMPLOYERS AND OTHER ORGANISATIONS

A large number of businesses and other employers have been involved in the design and content of this Diploma. Locally these include IA Computing, British Telecom, Price Waterhouse Cooper, RMD Consultancy and lots more!

Employers play a significant part in all the Diplomas. They provide work experience, assess modules and share both their resources and expertise.

This helps to ensure that the Diplomas give you the skills and experience that you need and that employers require for the 21st Century.

Universities are also fully involved. Your local University of Hertfordshire is deeply committed to the Diplomas, and is supporting all the local schools and the college in many different ways. As a result, most Diploma students will access University resources at some point in their programme.

You will have a minimum of 10 days work experience on each Diploma at each level

AFTER THE DIPLOMA?

You can progress onto the next level in the same Diploma line - from Foundation to Higher, or from Higher to Advanced - or even onto a different Diploma line! From the Higher you can take A-levels, IB or vocational qualifications at the equivalent level. Universities value Diploma learners, and an Advanced Diploma will give you at least 3.5 A-levels worth of UCAS points! Employers too recognise the Diploma as an excellent qualification for their staff.

Foundation = 5 GCSEs Grades D – G Higher = 7 GCSEs Grades A* - C Advanced = 3.5 A-levels

ENTRY REQUIREMENTS

Foundation = open entry

Higher (KS4) = average SATs score 5 (core subjects) or associated equivalent

Advanced = 5 x GCSEs A* - C or equivalent or associated equivalent

Higher full-time (post-16) = 4 x GCSEs D or above or equivalent

Note!!! Each Diploma line may have its own additional entry requirements – ask about this.